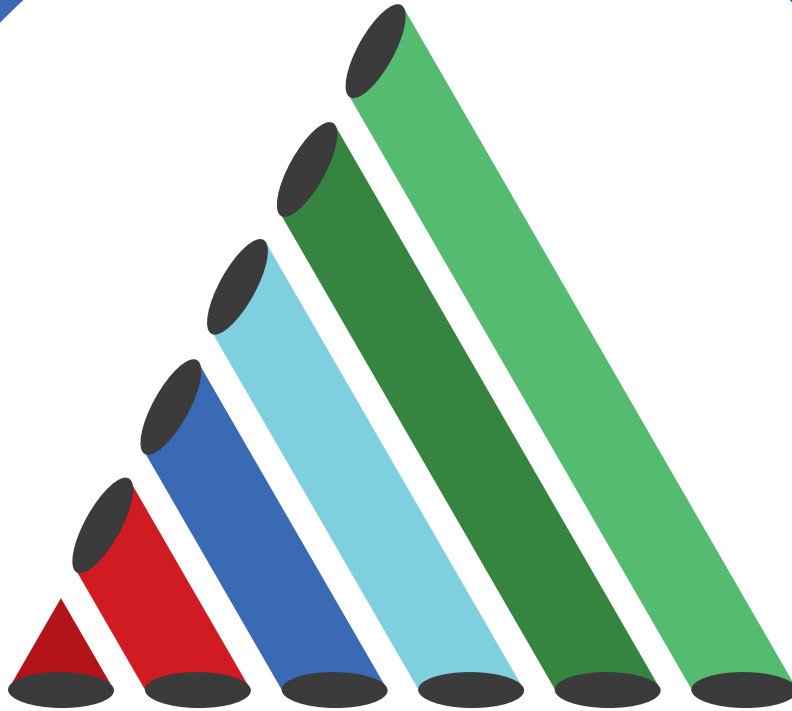


ALPHA STEEL PIPING SUPPLIES

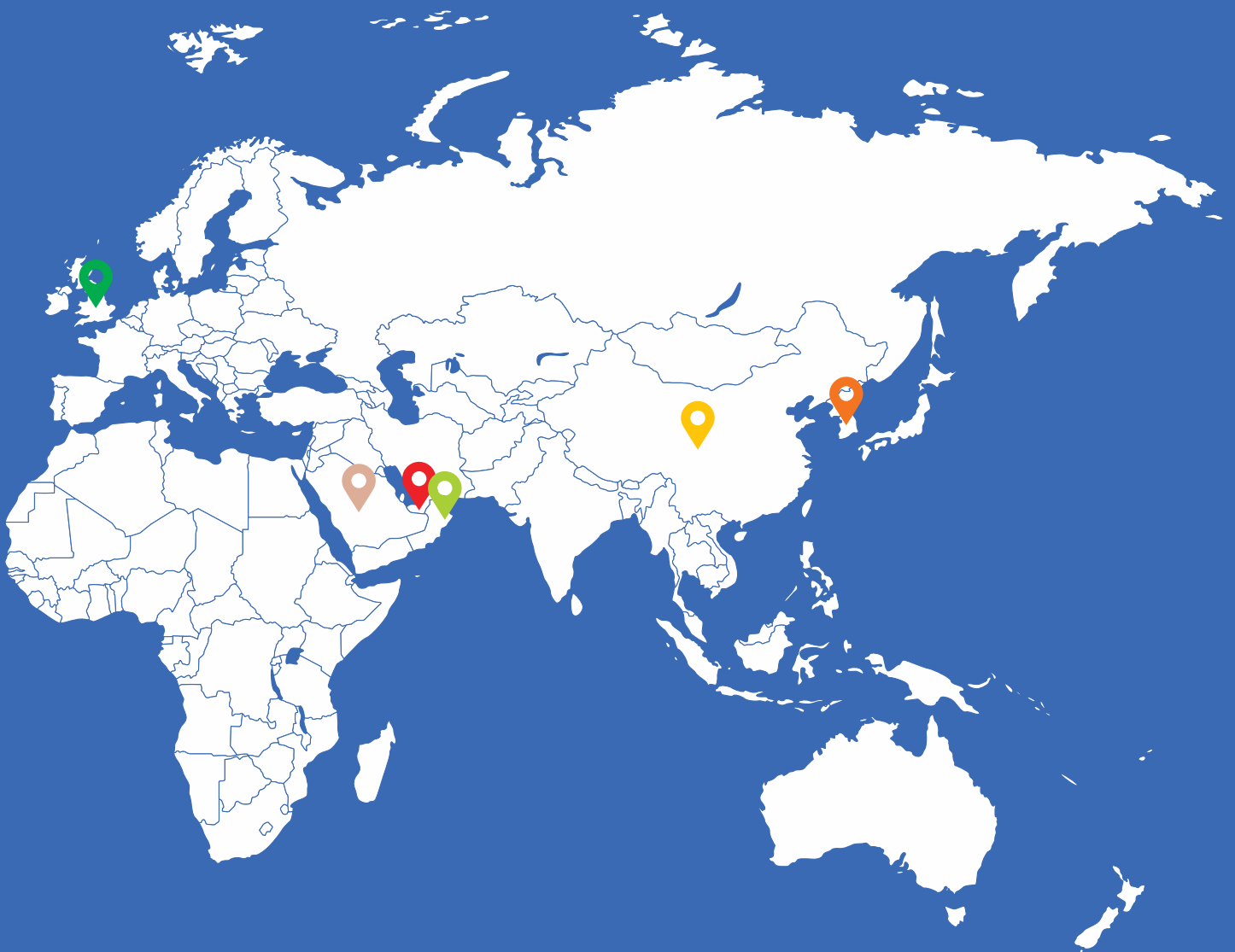


UNPARALLELED
PRACTICAL
SUSTAINABLE

PIPES | FITTINGS | FLANGES | PLATES | VALVES | BOLTS |
DISMANTLING\EXPANSION JOINTS | GASKETS |
ENGINEERED PRODUCTS | PIPE FABRICATIONS | COATINGS & LININGS



OUR OFFICES



UNITED ARAB EMIRATES



SAUDI ARABIA



OMAN



CHINA



SOUTH KOREA



UNITED KINGDOM



ALPHA STEEL
PIPING SUPPLIES

ABOUT US

ASPS is a well-known name in Industrial Piping. We market, supply, and distribute piping Products and services to the Oil & Gas, Energy (Conventional Renewables), Chemical, Petrochemical, Water, and Utility sectors.



ASPS prioritizes quality and on-time delivery. Our company's primary commitment is to provide the best value by collaborating with clients and manufacturers from diverse industries.

ASPS is based in Dubai's Commercility free zone and has active bases throughout the Gulf Cooperation Council (GCC) , China, United Kingdom, and South Korea.

We are primarily focused on providing high - quality products and services while expanding our market reach by constantly strengthening our product portfolio to deliver the best value for your money.



Vision

We aspire to become the most dependable and innovative Piping Supplier for every EPC operating in the Middle East.



Mission

- Supply to every Capital Project in the Middle East.
- To introduce and provide complete piping supply solutions to EPC'S.
- Develop a team of competent individuals in Supply Chain.
- To have the lowest service cost amongst our competitors.
- Create the highest value for our stakeholders.
- To achieve continuous sustainability in all our projects.



Values

Highest Ethics

Providing an honest service to clients.

01

Equality

By treating each client and employee with equal respect and fairness

02

Consistency

Consistently perform every time with the same efficiency

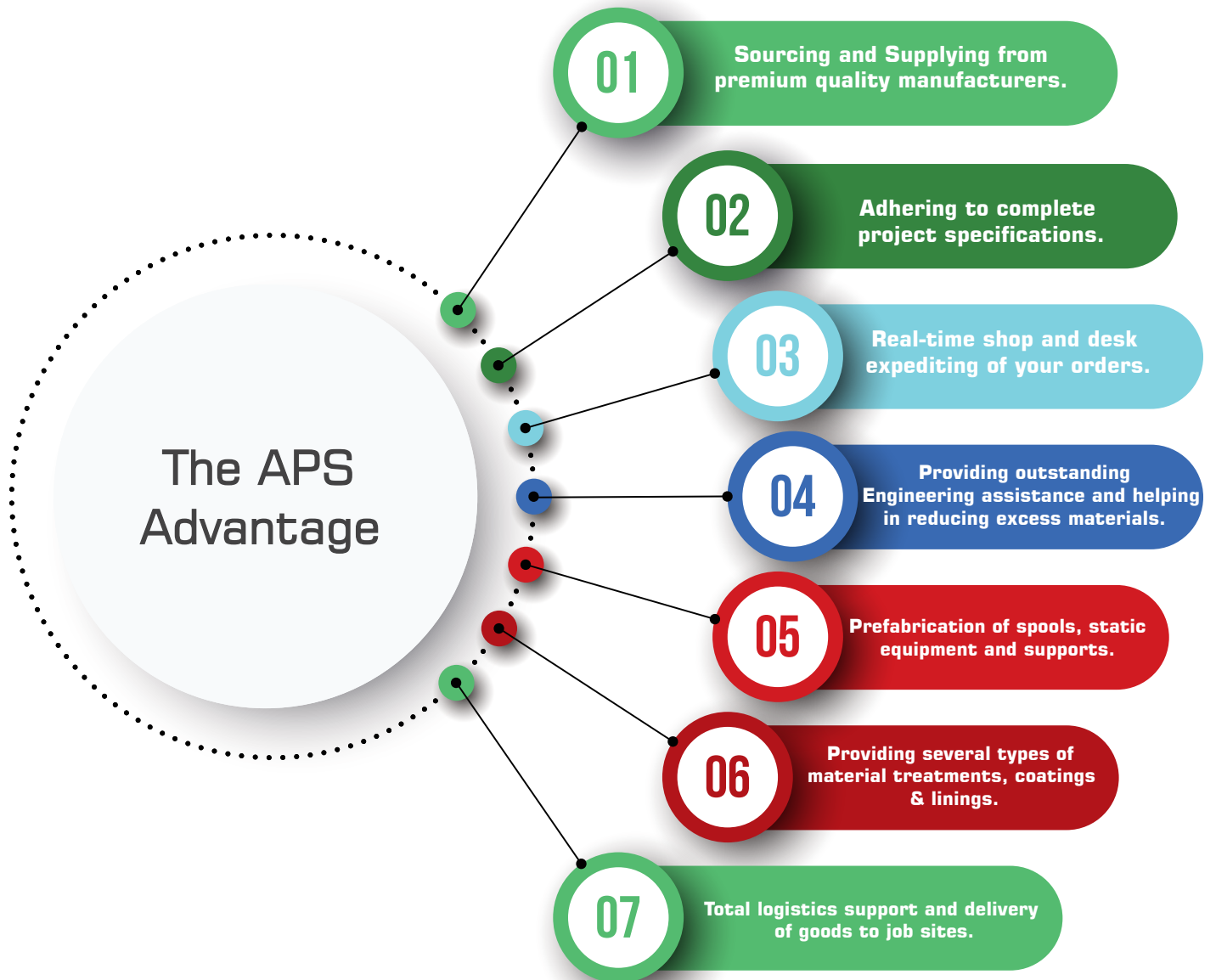
03

Accountability

Accepting complete responsibility to entrust ourselves to our client

04

CUSTOMIZED PIPING SOLUTIONS FOR YOUR PROJECTS



EXPERTISE & EXPERIENCE

You can rely on

The backbone and the core strength of APS is its team of highly experienced professionals who have been working over the past four decades for some of the world's biggest organizations in the Energy Sector. This has equipped APS not only with the understandings of the best practices of the industries but also has given us the confidence to deliver as per any given stringent requirements.



Our experts know their market segment inside out. They remain abreast with the newest developments taking place in Piping Materials, Manufacturing processes, new Piping products, Quality control, administration, coordination, and Logistics.

Simultaneously, they have organized themselves to the demands of future developments and concepts in order to constantly add value to the supply chain and stay as the preferred choice of customers and manufacturers.

Our team of professionals at APS brings complete transparency to the Supply Chain by procuring the raw materials needed for material manufacturing to delivering the finished product to the consumer.

APS is specialized at sourcing and supplying goods to fulfill the piping needs of any project, regardless of scale. We know the importance of meeting project deadlines and delivering on time. We adhere to delivery and manufacturing deadlines and provide fast, accurate, complete and honest reporting even in unfavorable conditions.



On a macro level, we understand the various aspects of client requirement and at concentrated micro level, we work with selected and approved manufacturers of significance to the client. We work closely with our clients to comprehend their specific requirements clearly, liaison with various stages in talking the language of the customer to the manufacturer, thereby keeping the commitment and providing best Piping Solutions right from beginning till the end of the project.

SAIFUDDIN MOHAMMED
Managing Director

PRODUCT PORTFOLIO

PIPES

CARBON STEEL

- ½" - 24" Seamless
- 2" - 120" Welded

AUSTENITIC STAINLESS STEEL

- ½" - 24" Seamless
- 1" - 80" Welded

ALLOY STEEL

- ½" - 24" Seamless
- 2" - 120" Welded

DUPLEX /SUPER DUPLEX STAINLESS STEEL

- ½" - 8" Seamless
- 8" - 80" Welded



FLANGES

CARBON STEEL

- ½" - 60" (MSS Series)

CARBON STEEL

- A & B for sizes 24" & above

DUPLEX STAINLESS STEEL

- ½" - 48" (MSS Series A & B
for sizes 24" & above)

AUSTENITIC STAINLESS STEEL

- ½" - 48" (MSS Series A & B
for sizes 24" & above)



FITTINGS

FORGED

- ¼" - 6" (Forged)

REINFORCED FITTINGS

- ¼" - 6" (Forged)

WROUGHT-BW

- ¼" - 24" (Seamless)

WROUGHT-BW

- 26" - 120" (Welded)



PIPING

PRODUCT TYPE

SIZE (RANGES)

MATERIAL STANDARD / GRADES

CARBON STEEL-

½" - 36" Seamless
2" - 120" Welded

API 5L PSL-1/2 (B, X42, X52, X60, X65, X70, X80),
ASTM A106/A53 Gr. A/B/C A333 Gr. 1/3/6/9
API 5L (B, X42, X52, X60, X65, X70, X80), A53 Gr.
A/B/C, ASTM A671/672 (Gr. CC60, CC65, CC70)
-CL 12, 22, 32, 42

AUSTENTIC STAINLESS STEEL

½" - 24" Seamless
1" - 80" Welded

ATSM A312 GR 304/304L, 316/316L,
321, 347, 904/904L
ASTM A358 GR 304/304L, 316/316L,
321, 347, 904/904L

DUPLEX /SUPER DUPLEX
STAINLESS STEEL

½" - 8" (Seamless)
8" - 80" (Welded)

ASTM A790 /ASTM A928 UNS
S31803/ S32205, UNS S32750/60

HIGH ALLOYS
(Nickel and its Alloys, Copper Based Alloys
& Titanium)Low temperature

½" - 24" (Seamless)
2" - 120" (Welded)

A335 P1, P11, P12, P22, P5, P9, P91, P92
A691 1CR, 1 1/4CR, 2 1/4CR, 5CR, 9CR, 91

CARBON STEEL-
Line Pipes Seamless/Welded (PSL1/2)
(PSL1/2)

½" - 24" Seamless
1" - 24" ERW
24" - 120" SAW
(Longitudinal or Spiral
as per customer's requirement)

API 5L PSL-1/2 (B, X42, X52, X60, X65, X70, X80)

CARBON STEEL-
Process Pipes Seamless/Welded

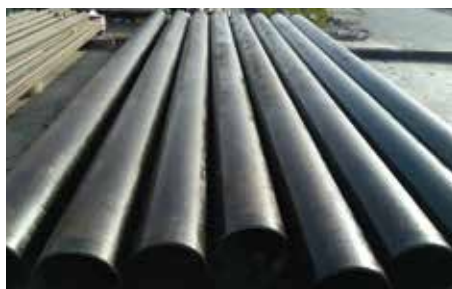
½" - 24" Seamless
1" - 24" ERW, 24" - 120" EFW

A STM A106 GR A/B/C, ASTM A53 GR B,
A STM A672 GR C60/C65/C70-CL 12, 22, 32, 42

CARBON STEEL-
Low temperature

¼" - 24" Seamless 24" - 120" EFW

ASTM A333 GR 6
ASTM A671 GR CC60 /CC65/CC70 CL 12, 22, 32, 42



FLANGES



PRODUCT TYPE

CARBON STEEL-
High temp/Low temp

AUSTENETIC & DUPLEX
STAINLESS STEEL

ALLOY STEELS



SIZE (RANGES)

½" - 60" (MSS Series
A & B for sizes 24" & above),
EN1092, AWWA C207, ASME SEC-VIII Div-1

½" - 48" (MSS Series A & B for sizes 24"
& above)

Upto - 24"

MATERIAL STANDARD / GRADES

ASTM A105/A350 LF2/LF6

ASTM A182 F304/304L, F316/316L, F321/ F347,
F304H, F316H/F51/F53/F55

Low Alloys in Gr. F1/F9/F11/F91/F92
Nickel Based Alloys Copper Based Alloys



FITTINGS



PRODUCT TYPE

CS-FORGED/REINFORCED FITTINGS
CS-WROUGHT-BW

STAINLESS STEEL-FORGED

STAINLESS STEEL-WROUGHT-BW

ALLOYS/CS/SS/DSS/SDSS-HIGH
TEMP/LOW TEMP

SIZE (RANGES)

¼" - 6" (Forged) ½"- 24"
(Seamless) 26"- 120" (Welded)

¼" - 6"

Upto - 60"

Upto - 60"

MATERIAL STANDARD / GRADES

ASTM A105, A350 LF2,LF6, A182, F52, F9,F11, F22/F91/F92
ASTM A234 WPB/WPC, A420 WPL6 A860/MSS SP75--WPHY 42
WPHY 46 WPHY 52 WPHY 60 WPHY 65 WPHY 70 (WROUGHT
FITTINGS)

ASTM A182 F304/304L, 316/316L, 904/904L

ASTM A403 GR-304/304L, 316/316L, 321/321H & 904/904L.

ASTM A420 WP1, WP5, WP9, WP11, WP22, WP91, WP92
(Low Alloys), UNS 31803, 32750/60, 250 SMO, UNS N88020,
UNS N6625, UNS N8825)

VALVES

GATE VALVE

- ½" - 48"
- (CL 150 – CL 2500)

GLOBE VALVE

- ½" - 24"
- (CL 150 – CL 2500)

NON-RETURN (CHECK)

- ½" - 48"
- (CL 150 – CL 2500)

BALL VALVE

- ½" - 56"
- (CL 150 – CL 2500)

BUTTERFLY VALVE

- 3" - 100"
- (CL 150 – CL 900)

PLUG VALVE

- ½" - 36"
- (CL 150 – CL 2500)

SAFETY RELIEF VALVES

- ¾" - 16"
- (CL 150 – CL 300)

DIAPHRAGM VALVES

- ¼" - 12"
- (PN 0.6, 1.0, 1.6 & CL 150)



GATE VALVES

PRODUCT TYPE

BOLTED AND BONNET
GATE VALVE:



SIZE (RANGES)

Rating: # 150, Size: 1 1/2"~48"
Rating: # 300, Size: 1 1/2"~48"
Rating: # 600, Size: 2"~42"
Rating: # 900~ #1500, Size: 2"~24"

MATERIAL STANDARD / GRADES

WCB, WC6, WC9, LCB, LCC, CF8 (304), CF8M(316),
CF3 (304L), CF3M (316L), CN7M (20 # alloy),
Duplex(4A), Super Duplex (5A/6A), CW6MC (INC 625),
CU5MCuC (INC 825) nickel alloy, Titanium& Monel Alloy

API, ANSI, ASME, MSS, BS, ISO & DIN.

PRESSURE SEAL
GATE VALVE:



Rating: # 900~ # 2500, Size: 2"~24"

WCB, WC6, WC9, LCB, LCC, CF8 (304), CF8M (316),
CF3 (304L), CF3M (316L), CN7M (20 # alloy),
Duplex(4A), Super Duplex(5A/6A), CW6MC (INC 625),
CU5MCuC (INC 825) nickel alloy, Titanium& Monel Alloy

API, ANSI, ASME, MSS, BS, ISO & DIN.

FORGED STEEL
GATE VALVE:



Rating: # 150~# 1500, Size: 1/2"~2"

LF2, LF3, LF5, A105, F22, F316/316L, F304/304L, F91,
410, Duplex, Super Duplex, INC625, INC825, nickel alloy
Titanium and Monel alloy.

API, ANSI, ASME, MSS, BS, ISO & DIN.

THROUGH CONDUIT &
KNIFE EDGE
GATE VALVE:



Rating: # 150~ # 300, Size: 2"~42"
Rating: # 600, Size: 2"~36"
Rating: # 900, Size: 2"~24"
Rating: # 1500, Size: 2"~10"

WCB, WC6, WC9, LCB, LCC, CF8 (304), CF8M (316),
CF3 (304L), CF3M (316L), CN7M (Alloy 20), Duplex (4A)
Super Duplex(5A), CW6MC (INC 625), CU5MCuC (INC 825)
nickel alloy, Titanium& Monel Alloy

API, ANSI, ASME, MSS, BS, ISO & DIN.

GATE VALVES

PRODUCT TYPE

POWERSTATION GATE VALVE



SIZE (RANGES)

Rating: # 900 ~ # 2500, Size: 2"~24"

MATERIAL STANDARD / GRADES

WCB, WC6, WC9, LCB, LCC, CF8 (304), CF8M (316), CF3 (304L), CF3M (316L), CN7M (Alloy 20), Duplex (4A), Super Duplex(5A), CW6MC (INC 625), CU5MCuC (INC 825), Titanium& Monel Alloy

API, ANSI, ASME, MSS, BS, ISO & DIN.

GLOBE VALVES

PRODUCT TYPE

GLOBE VALVE



SIZE (RANGES)

Rating:# 150 ~ # 1500, Size: 2"~24"

MATERIAL STANDARD / GRADES

WCB, WC6, WC9, LCB, LCC, CF8 (304), CF8M (316), CF3 (304L), CF3M (316L), CN7M (Alloy 20), Duplex (4A), Super Duplex (5A), CW6MC (INC 625), CU5MCuC (INC 825), Titanium& Monel Alloy.

API, ANSI, ASME, MSS, BS,ISO & DIN.

PRESSURE SEAL
GLOBE VALVE



Rating:# 900 ~ # 1500, Size: 2"~24"
Rating:# 2500, Size: 3"~18"

WCB, WC6, WC9, LCB, LCC, CF8 (304), CF8M (316), CF3 (304L), CF3M (316L), CN7M (Alloy 20), Duplex (4A), Super Duplex (5A), CW6MC (INC 625), CU5MCuC (INC 825), Titanium& Monel Alloy.

API, ANSI, ASME, MSS, BS, ISO & DIN.

FORGED STEEL GLOBE
VALVE



Rating:# 150 ~ # 2500, Size: ½"~2"

LF2,LF3, LF5, A105, F22, F316/316L, F304/304L, F91, 410,Duplex, Super Duplex, INC625, INC825, titanium and Monel alloy.

API, ANSI, ASME, MSS, BS, ISO & DIN.

CHECK VALVES

PRODUCT TYPE

SIZE (RANGES)

MATERIAL STANDARD / GRADES

SWING CHECK VALVE:
(BOLTED AND BONNET)



Rating: #150 ~ # 300, Size: 2"~48"
Rating: #900 ~ # 1500, Size: 2"~42"

WCB, WC6, WC9, LCB, LCC, CF8 (304), CF8M (316), CF3 (304L), CF3M (316L), CN7M (Alloy 20), Duplex (4A), Super Duplex(5A), CW6MC (INC 625), CU5MCuC (INC 825), Titanium & Monel Alloy.

API, ANSI, ASME, MSS, BS, ISO & DIN.

SWING CHECK VALVE:
(PRESSURE SEAL):



Rating: # 900 ~ # 1500, Size: 2"~42"
Rating: # 2500, Size: 3"~12"

WCB, WC6, WC9, LCB, LCC, CF8 (304), CF8M (316), CF3 (304L), CF3M (316L), CN7M (Alloy 20), Duplex (4A), Super Duplex(5A), CW6MC (INC 625), CU5MCuC (INC 825), Titanium & Monel Alloy.

API, ANSI, ASME, MSS, BS, ISO & DIN.

NON-SLAM CHECK VALVES



Rating: #150 ~ # 2500, Size: 2"~48"

WCB, WC6, WC9, LCB, LCC, CF8 (304), CF8M (316), CF3 (304L), CF3M (316L), CN7M (Alloy 20), Duplex (4A), Super Duplex(5A), CW6MC (INC 625), CU5MCuC (INC 825), Titanium & Monel Alloy.

API, ANSI, ASME, MSS, BS, ISO & DIN.

TILTING DISC CHECK VALVES



Rating: #150 ~ # 600, Size: 2"~24"

WCB, WC6, WC9, LCB, LCC, CF8 (304), CF8M (316), CF3 (304L), CF3M (316L), CN7M (Alloy 20), Duplex (4A), Super Duplex(5A), CW6MC (INC 625), CU5MCuC (INC 825), Titanium & Monel Alloy.

API, ANSI, ASME, MSS, BS, ISO & DIN.

CHECK VALVES

PRODUCT TYPE

SIZE (RANGES)

MATERIAL STANDARD / GRADES

SWING/PISTON/Y
TYPE CHECK VALVE:
(FORGED STEEL)



Rating: # 800 ~ # 2500, Size: ½" ~ 2"

LF2, LF3, LF5, A105, F22, F316/316L, F304/304L, F91, 410, Duplex, Super Duplex, IN6625, IN6825, Titanium & Monel alloy.

API, ANSI, ASME, MSS, BS, ISO & DIN.

DUAL PLATE
CHECK VALVE



Rating: # 150 ~ # 600, Size: 2" ~ 24"

WCB, WC6, WC9, LCB, LCC, CF8 (304), CF8M (316), CF3 (304L), CF3M (316L), CN7M (Alloy 20), Duplex (4A), Super Duplex(5A), CW6MC (IN 625), CU5MCuC (IN 825), Titanium & Monel Alloy.

API, ANSI, ASME, MSS, BS, ISO & DIN.

WAFER LIFT CHECK
VALVE



Rating: # 150 ~ # 900, Size: ½" ~ 4"

WCB, WC6, WC9, LCB, LCC, CF8 (304), CF8M (316), CF3 (304L), CF3M (316L), CN7M (Alloy 20), Duplex (4A), Super Duplex(5A), CW6MC (IN 625), CU5MCuC (IN 825), Titanium & Monel Alloy.

API, ANSI, ASME, MSS, BS, ISO & DIN.

BALL VALVES

PRODUCT TYPE

SIZE (RANGES)

MATERIAL STANDARD / GRADES

FULLY WELDED BALL
VALVE



Rating: # 150 ~ # 600, Size: 2" ~ 56" (FB/RB)
Rating: # 900, Size: 2" ~ 48" (FB/RB)
Rating: # 1500 ~ # 2500, Size: 2" ~ 24" (FB/RB)

WCB, WC6, WC9, LCB, LCC, CF8 (304), CF8M (316), CF3 (304L), CF3M (316L), CN7M (Alloy 20), Duplex (4A), Super Duplex(5A), CW6MC (IN 625), CU5MCuC (IN 825), Titanium and Monel alloy. F316/316L, A105, LF2, LF3, LF5, A105.

API, ANSI, ASME, MSS, BS, ISO & DIN.

BALL VALVES

PRODUCT TYPE

SIZE (RANGES)

MATERIAL STANDARD / GRADES

RISING STEM
BALL VALVE :



Rating: # 150 ~ # 600, Size: 2"~36"(FB/RB)
Rating: # 900 ~ # 1500, Size: 2"~20"(FB/RB)

WCB, WC6, WC9, LCB, LCC, CF8 (304), CF8M (316), CF3 (304L), CF3M (316L), CN7M (Alloy 20), Duplex (4A), Super Duplex(5A), CW6MC (INC 625), CU5MCuC (INC 825), Titanium and Monel alloy. F316/316L, A105, LF2, LF3, LF5, A105.

API, ANSI, ASME, MSS, BS, ISO & DIN.

THREE WAY BALL
VALVE:



Rating: # 150 ~# 300, Size: ½"~12"(FB/RB)

WCB, WC6, WC9, LCB, LCC, CF8 (304), CF8M (316), CF3 (304L), CF3M (316L), CN7M (Alloy 20), Duplex (4A), Super Duplex(5A), CW6MC (INC 625), CU5MCuC (INC 825), Titanium and Monel alloy. F316/316L, A105, LF2, LF3, LF5, A105.

API, ANSI, ASME, MSS, BS, ISO & DIN.

FLO ATING BALL
VALVES



Rating: #150~ # 300, Size: ½"~12"(FB/RB)
Rating: # 600, Size: ½"~6"(FB/RB)
Rating: # 900, Size: ½"~3"(FB/RB)
Rating: # 1500, Size: ½"~3"(FB/RB)
Rating: # 2500, Size: ½"~2" (FB/RB)

WCB, WC6, WC9, LCB, LCC, CF8 (304), CF8M (316), CF3 (304L), CF3M (316L), CN7M (Alloy 20), Duplex (4A), Super Duplex(5A), CW6MC (INC 625), CU5MCuC (INC 825) A105, Titanium and Monel alloy. F316/316L, A105, LF2, LF3, LF5.

API, ANSI, ASME, MSS, BS, ISO & DIN.

BOLTED SIDE ENTRY
TRUNNION MOUNTED
BALL V ALVE



Rating: # 150 ~# 600 , Size: 2"~60"(FB/RB)
Rating: # 900, Size: 2"~48"(FB/RB)
Rating: #1500, Size: 2"~24"(FB/RB)
Rating: # 2500, Size: 2"~16"(FB/RB)

WCB, WC6, WC9, LCB, LCC, CF8 (304), CF8M (316), CF3 (304L), CF3M (316L), CN7M (Alloy 20), Duplex (4A), Super Duplex (5A), CW6MC (INC 625), CU5MCuC (INC 825) A105, Titanium and Monel alloy. F316/316L, A105, LF2, LF3, LF5.

API, ANSI, ASME, MSS, BS, ISO & DIN.

BALL VALVES

PRODUCT TYPE

TOP ENTRY
TRUNNION MOUNTED
BALL VALVES



SIZE (RANGES)

Rating: #150 ~ # 600LB, Size: 2"~60"(FB/RB)
Rating: # 900, Size: 2"~36"(FB/RB)
Rating: # 1500, Size: 2"~24"(FB/RB)
Rating: # 2500, Size: 2"~12"(FB/RB)

MATERIAL STANDARD / GRADES

WCB, WC6, WC9, LCB, LCC, CF8 (304), CF8M (316), CF3 (304L), CF3M (316L), CN7M (Alloy 20), Duplex (4A), Super Duplex (5A), CW6MC (INC 625), CU5MCuC (INC 825) A105, Titanium and Monel alloy. F316/316L, A105, LF2, LF3, LF5.

API, ANSI, ASME, MSS, BS, ISO & DIN.

BUTTERFLY VALVES

PRODUCT TYPE

TRIPLE OFFSET / DOUBLE OFFSET HIGH
PERFORMANCE BUTTERFLY VALVES



SIZE (RANGES)

Rating: # 150 ~ # 300, Size: 3"~100"
Rating: # 600, Size: 3"~36"
Rating: # 900, Size: 3"~24"

MATERIAL STANDARD / GRADES

WCB, WC6, WC9, LCB, LCC, CF8 (304), CF8M (316), CF3 (304L), CF3M (316L), CN7M (Alloy 20), Duplex (4A), Super Duplex (5A), CW6MC (INC 625), CU5MCuC (INC 825) nickel alloy, Titanium & Monel Alloy.

API, ANSI, ASME, MSS, BS, ISO & DIN.

RESILIENT SEATED BUTTERFLY
VALVES (LUG & WAFER TYPE)

2"~24" (DN50~DN600)
Class PN10 ~ PN20 WAFER/LUGGED,
-10°C ~150°C, Wrench, Worm gear, Electric,
Pneumatic

CAST IRON, SG IRON, & CARBON STEEL;

EN12266, EN 539, API609, MSS SP67, ISO 5752.



PLUG VALVES

PRODUCT TYPE

PRESSURE BALANCED LUBRICATED
PLUG VALVES (SINGLE & TWIN/DOUBLE
ISOLATION TYPE)



SIZE (RANGES)

½" to 36" DN15 ~DN900
Class 150~2500 (PN16~PN 420)
RF, RTJ, BW, -46C ~ 560C, Wrench
Worm Gear, Electric, Pneumatic
Carbon Steel, Stainless Steel &
Alloy Steel Carbon Steel, Stainless
Steel & Alloy Steel.

MATERIAL STANDARD / GRADES

WCB, WCC, CF8, CF8M, CF3M, CF8C, CF3, LCB, LCC, LC1,
Duplex (4A) , Super Duplex (5A), CU5MCuC (INC 825),
CW6MC (INC 625).

API, ANSI, ASME, MSS, BS, ISO & DIN.



PLUG VALVES

PRODUCT TYPE

LUBRICATED STANDARD TYPE & NON-LUBRICATED SLEEVED PLUG VALVES



SIZE (RANGES)

2" to 32" DN50 ~DN800
Class 150~600 (PN16~PN 100)
RF, RTJ, BW, -46C~ 560C, Wrench
Worm Gear, Electric, Pneumatic
Carbon Steel, Stainless Steel &
Alloy Steel Carbon Steel, Stainless
Steel & Alloy Steel.

MATERIAL STANDARD / GRADES

WCB, WCC, CF8, CF8M, CF3M, CF8C, CF3, LCB, LCC, LC1
Duplex (4A), Super Duplex (5A), CU5MCuC (INC 825),
CW6MC (INC 625).

API, ANSI, ASME, MSS, BS, ISO & DIN.

BRONZE VALVE



Size, ½" to 24"
Class 150~300 (PN6~PN 50)
RF, FF, Thread -29°C ~120°C,
Handwheel, Wrench
Worm Gear, Electric,

BRONZE, ALUMINIUM BRONZE,
NI-ALUMINIUM BRONZE

DBBV PLUG VALVES
(NON-LUBRICATED)



Size, 2" to 32" DN50 ~DN800
Class 150~600 (PN16~PN 100)
RF, RTJ, BW, -46 C~ 560°C, Wrench
Worm Gear, Electric, Pneumatic
Carbon Steel, Stainless Steel &
Alloy Steel Carbon Steel, Stainless
Steel & Alloy Steel.

ASTM A216 WCB, ASTM A216 WCC, ASTM A351 CF8, CF8M,
CF3M, CF8C, CF3, ASTM A352 LCB, LCC, LC1, ASTM A890 4A, 5A
BRONZE, ALUMINIUM BRONZE, NI-ALUMINIUM BRONZE.

API, ANSI, ASME, MSS, BS, ISO & DIN.

SPECIAL SERVICE VALVES

PRODUCT TYPE

BELLOW SEALED
(GATE / GLOBE)
VALVES



SIZE (RANGES)

½" to 24" DN15 ~DN600
Class #150 ~ #600
Hand wheel, Wrench,
Worm Gear, Electric and
Pneumatic

MATERIAL STANDARD / GRADES

WCB, WC6, WC9, LCB, LCC, CF8 (304), CF8M (316),
CF3 (304L), CF3M (316L), CN7M (Alloy 20), Duplex (4A),
Super Duplex(5A), CW6MC (INC 625), CU5MCuC (INC 825)
Titanium& Monel Alloy.

API, ANSI, ASME, MSS, BS, ISO & DIN.

SPECIAL SERVICE VALVES

PRODUCT TYPE

CRYOGENIC (GATE / GLOBE/BALL) VALVES)



GATE: Sizes: NPS ½"~NPS 36"
Pressure Range: # 150 ~ #2500
GLOBE: Sizes: NPS ½"~NPS 16"
Pressure Range: #150~#1500
BALL: Sizes: NPS ½"~NPS 12"
Pressure Range: #150~#2500

Temperature : -40°C to -196° C

MATERIAL STANDARD / GRADES

WCB, WC6, WC9, LCB, LCC, CF8 (304), CF8M (316), CF3 (304L), CF3M (316L), CN7M (Alloy 20), Duplex (4A), Super Duplex (5A), CW6MC (INC 625), CU5MCuC (INC 825) Titanium& Monel Alloy,

API, ANSI, ASME, MSS, BS, ISO & DIN.

PRODUCT TYPE

LINEAR/ANGULAR
CONTROL GLOBE VALVES



SIZE (RANGES)

Rating: # 150~ # 300, Size: ½" ~16"
Rating: # 600, Size: 6"~36"
Rating: # 900 ~#2500, Size: 2"~16"

MATERIAL STANDARD / GRADES

WCB, WC6, WC9, LCB, LCC, CF8 (304), CF8M (316), CF3 (304L), CF3M (316L), CN7M (Alloy 20), Duplex (4A), Super Duplex(5A), CW6MC (INC 625), CU5MCuC (INC 825) Titanium& Monel Alloy.

ROTARY CONTROL VALVES
(SEGMENTED BALL & TOBV)



BALL :
Rating: # 150~ # 600, Size: 6" ~24"
Rating: # 900, Size: 6"~16"

BUTTERFLY:
Sizes: NPS3"~NPS 24"
Pressure Range: #150~#1500

WCB, WC6, WC9, LCB, LCC, CF8 (304), CF8M (316), CF3 (304L), CF3M (316L), CN7M (Alloy 20), Duplex (4A), Super Duplex (5A), CW6MC (INC 625), CU5MCuC (INC 825) Titanium& Monel Alloy

STRAINERS

PRODUCT TYPE

Y TYPE STRAINERS



SIZE (RANGES)

Rating: # 150 ~ # 300, Size:2"~24"

Temperature: Up to 400 Deg C

Manufacturer's Standard

MATERIAL STANDARD / GRADES

CAST IRON,
CARBON STEEL
STAINLESS STEEL.



STRAINERS

PRODUCT TYPE

SIZE (RANGES)

MATERIAL STANDARD / GRADES

BASKET STRAINERS



Rating: # 150 ~ # 300, Size: 1"~24"

Temperature: Up to 400 Deg C

Manufacturer's Standard



CAST IRON,
CARBON STEEL
STAINLESS STEEL

DUPLEX STRAINERS



Rating: # 150 ~ # 300, Size: 2"~24"

Temperature: Up to 400 Deg C

Manufacturer's Standard



IS1239, 3589 ASTM A106,
SS 304, SS316, DUPLEX STEEL

VALVE BODY

BODY TYPE

MATERIAL

BODY STANDARD

BONNET STANDARD

CASTINGS

STAINLESS STEEL CARBON
STEEL CHROME-MOLY

A351 - CF8M A216 - WCB A217
- WC6 A217 - WC9 A217 - C5

A479 - 316
A675 - 70
479 - 316
479 - 316
A479 - 316

FORGINGS

STAINLESS STEEL CARBON
STEEL CHROME-MOLY

A743 - CF8M A105
A182 - F11 A182 - F22 A 182 - F5A

A479 - 316
A675 - 70
A479 - 316
A479 - 316
A479 - 316

BAR

STAINLESS STEEL
CARBON STEEL CHROME-MOLY

A182 - F316 A479 - 316
A675 - 70
SEE FORGINGS

A479 - 316
A479 - 316
A675 - 70
SEE FORGINGS



BOLTING

BOLTS & NUTS

PRODUCT TYPE

CS/SS HIGH/LOW TEMP

SIZE (RANGES)

1/8" - 3"

MATERIAL STANDARD / GRADES

Bolts ASTM A193 B7/B7M A320 L7/L7M Nuts - ASTM A194
2H/2HM ASTM A182 F304/304L, 316/316L, 904/904L
B8 / B8M



GASKETS

PRODUCT TYPE

- 1) SPIRAL WOUND GASKETS
- 2) RING JOINT GASKETS
- 3) NON-METALLIC GASKETS
- 4) RUBBER GASKET WITH METAL INSERTS
- 5) INSULATION KIT GASKET
- 6) CAMPROFILE GASKETS

SIZE (RANGES)

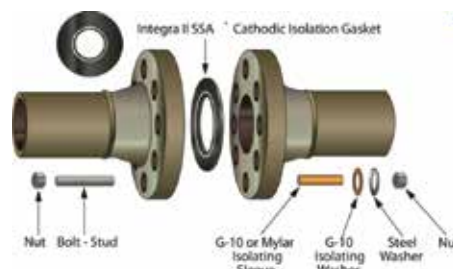
ALL STANDARD SIZES

AS PER ASME B16.20 (FOR METALLIC) / ASME B16.21 (FOR NON-METALLIC)

MATERIAL STANDARD / GRADES

METALLIC: CS / SS / DSS / SDSS / SPECIAL ALLOYS

NON-METALLICS: RUBBER (EPDM / NBR / VITON), CNAF, PTFE/TEFLON



EXPANSION JOINTS

The Expansion Joints absorb movements, vibrations, and tensions in the pipe systems with fluids at temperatures under 200 °C (390 °F) and standard pressures. They provide protection against thermal movements and mechanical forces for high value equipment (pumps, valves, condensers, etc.).

PRODUCT TYPE

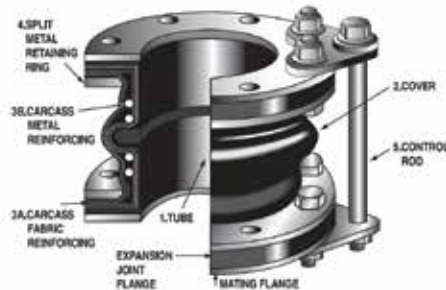
EXPANSION JOINT
(TYPES : RUBBER & METALLIC
EXPANSION JOINTS)

SIZE (RANGES)

DN40 (1½") to DN2500 (100")

MATERIAL STANDARD / GRADES

BODY: ASTM A105 / ASTM A36 / A182 304/304L/316/316L
DESIGN / PRESSURE RATING : EJMA STD.
ASME B16.5 / B16.47 / AWWA C207 OR EQUIV.
BOLTS : ASTM A193 B7/B7M A320 L7/L7M / B8M
NUTS - ASTM A194 2H/2HM / 8M



DISMANTLING JOINTS

The Dismantling Joints are double flanged fittings that accommodate up to 100mm (4") longitudinal adjustment and can be locked at the required length with the tie bars supplied. Not only does this system allow for fast, easy maintenance of valves, pumps or meters, it simplifies future pipe work modifications and reduces downtime when changes need to be made.

PRODUCT TYPE

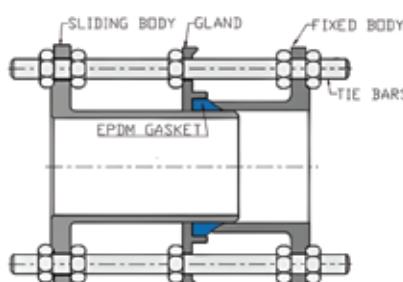
DISMANTLING JOINT

SIZE (RANGES)

DN40 (1½") to DN2500 (100")

MATERIAL STANDARD / GRADES

BODY: ASTM A105 / ASTM A36 / IS2062
DESIGN / PRESSURE RATING :
ASME B16.5 / B16.47 / AWWA C207 OR EQUIV.
BOLTS: ASTM A193 B7/B7M A320 L7/L7M / B8M
NUTS - ASTM A194 2H/2HM / 8M



SERVICES PORTFOLIO

1 Fabrication

APS is specialized in providing complete fabrication service. Our Engineering team is equipped with all the necessary software for providing fabrication drawings, complete MTO's, etc.

Our workshop & support services are systemized through an in-house ERP system.

Our workshop is arranged into job shops for preparation works, followed by fabrication bays, sand-blasting & painting areas, finally going into finishing/packing areas. There are dedicated & separate sheds for Stainless, Duplex, Super Duplex & other non-ferrous materials.



SERVICES PORTFOLIO

2 Material Treatment

The following is the list of material treatments that we offer:

- Blasting and red lead primer coating.
- Combining the techniques of thermal and electrolytic galvanizing, thermal oxidation, chemical cleaning, and miter cutting.
- Treatment of metals and plastics to achieve desired shapes, such as twisting and tapers, for use in mechanical applications.
- FBE coatings, epoxy coatings, coal tar enameling, and mortar linings.
- Rubber lining.



3 Logistics

Material Storage

We can lower overall costs due to our effective stock management, for which we employ the most cutting-edge equipment. This allows us to keep our costs under control.

Client-specific Stocks

We can temporarily store Stocks customized to a customer for large projects and then deliver it in the required quantities to the job locations.

Export paperwork and packaging

Our area of expertise is exporting essential products. We ensure products are correctly packaged for export, provide the required documentation, and arrange transportation to any port or city worldwide. We promise that our customers will receive their orders on time, in the chosen location, and in accordance with their specifications.

SERVICES PORTFOLIO

4 Document Management

When it comes to the essential needs of a project, we know the value of having the proper documentation. As part of our service to our clients, we compile comprehensive technical documentation and data dossiers as per the contract.

Depending on the specifics of the client's request, documentation typically include:

- ***Project Quality Plan***
- ***Inspection and testing plan for the project***
- ***Procedures for manufacturing and testing***
- ***Specifications for welding procedures (WPS)***
- ***Records of prequalification (PQR)***
- ***Reports on Nondestructive Testing***
- ***Material Test Certificate to DIN 50049 or EN 10204 type 2.1, 2.2, 2.3, 3.1, 3.2 (3.1b, 3.1c) as required by the client.***
- ***Each QC dossier receives the number of copies specified in the contract.***

5 Inspection and Testing

Depending on the client's request, additional testing's may include the following:

Mechanical testing's such as

Tensile Test
Bending, Flattening, Elongation Test
Hardness Test
Charpy V Notch Impact Test

Chemical analysis of product

Metallographic Examination

Huey, Strauss, Pitting, Crevice HIC, SSC, SWC, etc., are all destructive tests our team uses to determine a material's susceptibility to corrosion.

Non-destructive examinations

X-Ray, Fluoroscopy
Ultrasonic Examination
Magnetic Particle Examination
Dye Penetrant Testing
Final Visual and Dimensional Examination

OUR USP

- We are the mill's representatives. Hence a Client's project will get prices of a mill and services of a local stockiest.
- We provide total Piping Supply Solutions to your needs, starting from procurement of raw materials until delivery of fabricated spools to your site.
- Clients have complete access to after sales support, including attending to any issues at a Project Site within 24 hours.
- Our in depth knowledge of GCC customs clearance, transportation & legal procedures will aid in expediting delivery of materials to the job site.
- UPS is always ready for long term prices & delivery agreements for the entire duration of the projects.
- We can adapt to changes in design and engineering during Pre & Post bids.
- We can offer flexible buy-back policies.

PRE-FABRICATED PIPING SPOOLS



WEIGHTS AND DIMENSIONS OF CARBON STEEL PIPES

Blue: Wall Thickness in Millimeters

Red: Weight Per Meter in Kilograms

SI UNITS - ASME / ANSI B 36.10M



ALPHA STEEL
PIPING SUPPLIES

| ASME PIPE SCHEDULES | | | | | | | | | | | | | | | |
|-----------------------------------|---------|----------------|-----------------|-----------------|----------------|-----------------|-----------------|-----------------|-----------------|-----------------|-----------------|-----------------|-----------------|-----------------|--------------------|
| Nominal pipe size inches | OD MM | 10 | 20 | 30 | STD | 40 | 60 | XS | 80 | 100 | 120 | 140 | 160 | XXS | Shipping Vol/m3 |
| 1/8 | 10.30 | 1.24 0.28 | | 1.45 0.32 | 1.73 0.37 | 1.73 0.37 | | 2.41 0.47 | 2.41 0.47 | | | | | 4.83 0.65 | 0.0001 |
| 1/4 | 13.70 | 1.65 0.49 | | 1.85 0.54 | 2.24 0.63 | 2.24 0.63 | | 3.02 0.80 | 3.02 0.80 | | | | 3.68 0.91 | 6.05 1.41 | 0.0001 |
| 3/8 | 17.10 | 1.65 0.63 | | 1.85 0.70 | 2.31 0.84 | 2.31 0.84 | | 3.20 1.10 | 3.20 1.10 | | | | 4.01 1.29 | 6.40 1.69 | 0.0003 |
| 1/2 | 21.30 | 2.11 1.00 | | 2.41 1.12 | 2.77 1.27 | 2.77 1.27 | | 3.73 1.62 | 3.73 1.62 | | | | 4.78 1.95 | 7.47 2.55 | 0.0004 |
| 3/4 | 26.70 | 2.11 1.28 | | 2.41 1.44 | 2.87 1.69 | 2.87 1.69 | | 3.91 2.20 | 3.91 2.20 | | | | 5.56 2.90 | 7.82 3.64 | 0.0007 |
| 1 | 33.40 | 2.77 2.09 | | 2.90 2.18 | 3.38 2.50 | 3.38 2.50 | | 4.55 3.24 | 4.55 3.24 | | | | 6.35 4.24 | 9.09 5.45 | 0.0011 |
| 1 1/4 | 42.20 | 2.77 2.69 | | 2.97 2.87 | 3.56 3.39 | 3.56 3.39 | | 4.85 4.47 | 4.85 4.47 | | | | 6.35 5.61 | 9.70 7.77 | 0.0018 |
| 1 1/2 | 48.30 | 2.77 3.11 | | 3.18 3.53 | 3.68 4.05 | 3.68 4.05 | | 5.08 5.41 | 5.08 5.41 | | | | 7.14 7.25 | 10.15 9.56 | 0.0023 |
| 2 | 60.30 | 2.77 3.93 | | 3.18 4.48 | 3.91 5.44 | 3.91 5.44 | | 5.54 7.48 | 5.54 7.48 | | | | 8.74 11.11 | 11.07 13.44 | 0.0036 |
| 2 1/2 | 73.00 | 3.05 5.26 | | 4.78 8.04 | 5.16 8.63 | 5.16 8.63 | | 7.01 11.41 | 7.01 11.41 | | | | 9.53 14.92 | 14.02 20.39 | 0.0053 |
| 3 | 88.90 | 3.05 6.46 | | 4.78 9.92 | 5.49 11.29 | 5.49 11.29 | | 7.62 15.27 | 7.62 15.27 | | | | 11.13 21.35 | 15.24 27.68 | 0.0079 |
| 3 1/2 | 101.60 | 3.05 7.41 | | 4.78 11.41 | 5.74 13.57 | 5.74 13.57 | | 8.08 18.63 | 8.08 18.63 | | | | | | 0.0103 |
| 4 | 114.30 | 3.05 8.37 | | 4.78 12.91 | 6.02 16.07 | 6.02 16.07 | | 8.56 22.32 | 8.56 22.32 | | 11.13 28.32 | | 13.49 33.54 | 17.12 41.03 | 0.0130 |
| 5 | 141.30 | 3.40 11.56 | | | 6.55 21.77 | 6.55 21.77 | | 9.53 30.97 | 9.53 30.97 | | 12.70 40.28 | | 15.88 49.11 | 19.05 57.43 | 0.0199 |
| 6 | 168.30 | 3.40 13.83 | | | 7.11 28.26 | 7.11 28.26 | | 10.97 42.56 | 10.97 42.56 | | 14.27 54.20 | | 18.26 67.56 | 21.95 79.22 | 0.028 |
| 8 | 219.10 | 3.76 19.97 | 6.35 33.31 | 7.04 36.81 | 8.18 42.55 | 8.18 42.55 | 10.31 53.08 | 12.70 64.64 | 12.70 64.64 | 15.09 75.92 | 18.26 90.44 | 20.62 100.92 | 23.01 111.27 | 22.23 107.92 | 0.048 |
| 10 | 273.10 | 4.19 27.78 | 6.35 41.77 | 7.80 51.03 | 9.27 60.31 | 9.27 60.31 | 12.70 81.55 | 12.70 81.55 | 15.09 96.01 | 18.26 114.75 | 21.44 133.06 | 25.40 155.15 | 28.58 172.33 | 25.40 155.15 | 0.074 |
| 12 | 323.90 | 4.57 35.98 | 6.35 49.73 | 8.38 65.20 | 9.53 73.88 | 9.53 73.88 | 14.27 108.96 | 12.70 97.46 | 17.48 132.08 | 21.44 159.91 | 25.40 186.97 | 28.58 208.14 | 33.32 238.76 | 25.40 186.97 | 0.104 |
| 14 | 355.60 | 6.35 54.69 | 7.92 67.90 | 9.53 81.33 | 9.53 81.33 | 11.13 94.55 | 15.09 126.71 | 12.70 107.39 | 19.05 158.10 | 23.83 194.96 | 27.79 224.65 | 31.75 253.56 | 35.71 281.70 | | 0.126 |
| 16 | 406.40 | 6.35 62.64 | 7.92 77.83 | 9.53 93.27 | 9.53 93.27 | 12.70 123.30 | 16.66 160.12 | 12.70 123.30 | 21.54 203.53 | 26.19 245.56 | 30.96 286.64 | 36.53 333.19 | 40.49 365.35 | | 0.165 |
| 18 | 457.00 | 6.35 70.57 | 7.92 87.71 | 11.13 122.38 | 9.53 105.16 | 14.27 155.80 | 19.05 205.74 | 12.70 139.15 | 23.83 254.55 | 29.36 309.62 | 34.93 363.56 | 39.67 408.26 | 45.24 459.37 | | 0.208 |
| 20 | 508.00 | 6.35 78.55 | 9.53 117.15 | 12.70 155.12 | 9.53 117.15 | 15.09 183.42 | 20.62 247.83 | 12.70 155.12 | 26.19 311.17 | 32.54 381.53 | 38.10 441.49 | 44.45 508.11 | 50.01 564.81 | | 0.258 |
| 22 | 559.00 | 6.35 86.54 | 9.53 129.13 | 12.70 171.09 | 9.53 129.13 | | 22.23 294.25 | 12.70 171.09 | 28.58 373.83 | 34.93 451.42 | 41.28 527.02 | 47.63 600.63 | 53.98 672.26 | | 0.312 |
| 24 | 610.00 | 6.35 94.53 | 9.53 141.12 | 14.27 209.64 | 9.53 141.12 | 17.48 255.41 | 24.61 355.26 | 12.70 187.06 | 30.96 442.08 | 38.89 547.71 | 46.02 640.03 | 52.37 720.15 | 59.54 808.22 | | 0.372 |
| 26 | 666.00 | 7.92 127.36 | 12.70 202.72 | | 9.53 152.87 | | | 12.70 202.72 | | | | | | | 0.435 |
| 28 | 711.00 | 7.92 137.32 | 12.70 218.69 | 15.88 271.21 | 9.53 164.85 | | | 12.70 218.69 | | | | | | | 0.505 |
| 30 | 762.00 | 7.92 147.28 | 12.70 234.67 | 15.88 292.18 | 9.53 176.85 | | | 12.70 234.67 | | | | | | | 0.580 |
| 32 | 813.00 | 7.92 157.24 | 12.70 250.64 | 15.88 312.15 | 9.53 188.82 | 17.48 342.91 | | 12.70 250.64 | | | | | | | 0.660 |
| 34 | 864.00 | 7.92 167.20 | 12.70 266.61 | 15.88 332.12 | 9.53 200.31 | 17.48 364.90 | | 12.70 266.61 | | | | | | | 0.746 |
| 36 | 914.00 | 7.92 176.96 | 12.70 282.27 | 15.88 351.70 | 9.53 212.56 | 19.05 420.42 | | 12.70 282.27 | | | | | | | 0.835 |
| 38 | 965.00 | | | | 9.53 224.54 | | | 12.70 298.24 | | | | | | | 0.931 |
| 40 | 1016.00 | | | | 9.53 236.53 | | | 12.70 314.22 | | | | | | | 1.032 |
| 42 | 1067.00 | | | | 9.53 248.52 | | | 12.70 330.19 | | | | | | | 1.138 |
| 44 | 1118.00 | | | | 9.53 260.50 | | | 12.70 346.16 | | | | | | | 1.249 |
| 46 | 1168.00 | | | | 9.53 272.25 | | | 12.70 361.82 | | | | | | | 1.364 |
| 48 | 1219.00 | | | | 9.53 284.24 | | | 12.70 377.79 | | | | | | | 1.485 |

WEIGHTS AND DIMENSIONS OF STAINLESS STEEL PIPES

Blue: Wall Thickness in Millimeters

Red: Weight Per Meter in Kilograms

SI UNITS - ASME / ANSI B 36.19M



ALPHA STEEL
PIPING SUPPLIES

| ASME PIPE SCHEDULES | | | | | | | | | | | | | | |
|--------------------------|---------|----------------|----------------|----------------|-----------------|----------------|-----------------|-----------------|-----------------|-----------------|-----------------|-----------------|-----------------|-----------------------------|
| Nominal pipe size inches | OD MM | 5S | 10S | 20 | 30 | 40S | 60 | 80S | 100 | 120 | 140 | 160 | XXS | Shipping Vol/m ³ |
| 1/8 | 10.30 | 0.89 0.21 | 1.24 0.28 | | | 1.73 0.37 | | 2.41 0.48 | | | | | | 0.0001 |
| 1/4 | 13.70 | 1.24 0.39 | 1.65 0.50 | | | 2.24 0.64 | | 3.02 0.81 | | | | | | 0.0001 |
| 3/8 | 17.10 | 1.24 0.49 | 1.65 0.64 | | | 2.31 0.86 | | 3.20 1.12 | | | | | | 0.0003 |
| 1/2 | 21.30 | 1.65 0.81 | 2.11 1.02 | | | 2.77 1.29 | | 3.73 1.64 | | | | 4.78 1.98 | 7.47 2.59 | 0.0004 |
| 3/4 | 26.70 | 1.65 1.03 | 2.11 1.30 | | | 2.87 1.71 | | 3.91 2.23 | | | | 5.56 2.94 | 7.82 3.69 | 0.0007 |
| 1 | 33.40 | 1.65 1.31 | 2.77 2.12 | | | 3.38 2.54 | | 4.55 3.29 | | | | 6.35 4.30 | 9.09 5.53 | 0.0011 |
| 1 1/4 | 42.20 | 1.65 1.67 | 2.77 2.73 | | | 3.56 3.44 | | 4.85 4.53 | | | | 6.35 5.69 | 9.09 7.88 | 0.0018 |
| 1 1/2 | 48.30 | 1.65 1.93 | 2.77 3.16 | | | 3.68 4.11 | | 5.08 5.49 | | | | 7.14 7.35 | 10.16 9.69 | 0.0023 |
| 2 | 60.30 | 1.65 2.42 | 2.77 3.99 | | | 3.91 5.52 | | 5.54 7.60 | | | | 8.74 11.29 | 11.07 13.65 | 0.0036 |
| 2 1/2 | 73.00 | 2.11 3.75 | 3.05 5.34 | | | 5.16 8.77 | | 7.01 11.59 | | | | 9.53 15.15 | 14.02 20.72 | 0.0053 |
| 3 | 88.90 | 2.11 4.59 | 3.05 6.56 | | | 5.49 11.47 | | 7.62 15.51 | | | | 11.13 21.67 | 15.24 28.11 | 0.0079 |
| 3 1/2 | 101.60 | 2.11 5.26 | 3.05 7.53 | | | 5.74 13.78 | | 8.08 18.92 | | | | | | 0.0103 |
| 4 | 114.30 | 2.11 5.93 | 3.05 8.50 | | | 6.02 16.32 | | 8.56 22.66 | | 11.13 28.75 | | 13.49 34.05 | 17.12 41.66 | 0.0130 |
| 5 | 141.30 | 2.77 9.61 | 3.40 11.74 | | | 6.55 22.10 | | 9.53 31.44 | | 12.70 40.90 | | 15.88 49.87 | 19.05 58.31 | 0.0199 |
| 6 | 168.30 | 2.77 11.48 | 3.40 14.04 | | | 7.11 28.69 | | 10.97 43.21 | | 14.27 55.03 | | 18.26 68.59 | 21.95 80.43 | 0.028 |
| 8 | 219.10 | 2.77 15.00 | 3.76 20.27 | 6.35 33.82 | 7.04 37.38 | 8.18 43.20 | 10.31 53.90 | 12.70 65.63 | 15.09 77.08 | 18.26 91.82 | 20.62 102.47 | 23.01 112.97 | 22.23 109.57 | 0.048 |
| 10 | 273.10 | 3.40 22.93 | 4.19 28.21 | 6.35 42.41 | 7.80 51.81 | 9.27 61.23 | 12.70 82.80 | 12.70 82.80 | 18.26 116.50 | 21.44 135.08 | 25.40 157.52 | 28.58 174.96 | 25.40 157.52 | 0.074 |
| 12 | 323.90 | 3.96 31.72 | 4.57 36.54 | 6.35 50.48 | 8.38 66.20 | 9.53 75.01 | 14.27 110.62 | 12.70 98.95 | 21.44 162.35 | 25.40 189.82 | 28.58 211.31 | 33.32 242.40 | 25.40 189.82 | 0.104 |
| 14 | 355.60 | 3.96 34.34 | 4.78 41.98 | 7.92 68.94 | 9.53 82.57 | 9.53 81.53 | 15.09 128.64 | 12.70 107.4 | 23.83 197.94 | 27.79 228.07 | 31.75 257.43 | 35.71 285.99 | | 0.126 |
| 16 | 406.40 | 4.19 42.19 | 4.78 48.06 | 7.92 79.01 | 9.53 94.69 | 9.53 93.27 | 16.66 162.56 | 12.70 123.31 | 26.19 249.30 | 30.96 291.01 | 36.53 338.27 | 40.49 370.93 | | 0.165 |
| 18 | 457.00 | 4.19 47.50 | 4.78 54.12 | 7.92 89.05 | 11.13 124.24 | 9.53 105.14 | 19.05 208.87 | 12.70 139.20 | 29.36 314.34 | 34.93 369.10 | 39.67 388.77 | 45.24 466.37 | | 0.208 |
| 20 | 508.00 | 4.78 60.22 | 5.54 69.69 | 9.53 118.93 | 12.70 157.48 | 9.53 117.15 | 20.62 251.61 | 12.70 155.13 | 32.54 387.34 | 38.10 448.22 | 44.45 515.86 | 50.01 573.43 | | 0.258 |
| 22 | 559.00 | 4.78 66.32 | 5.54 76.76 | 9.53 131.10 | 12.70 173.70 | | 22.23 298.74 | | 34.93 458.30 | 41.28 535.06 | 47.63 609.79 | 53.98 682.51 | | 0.312 |
| 24 | 610.00 | 5.54 83.84 | 6.35 95.97 | 9.53 143.27 | 14.27 212.83 | 9.53 141.12 | 24.61 360.68 | 12.70 125.61 | 38.89 556.06 | 46.02 649.79 | 52.37 731.13 | 59.54 820.54 | | 0.372 |
| 26 | 666.00 | | | | | | | | | | | | | 0.435 |
| 28 | 711.00 | | | | | | | | | | | | | 0.505 |
| 30 | 762.00 | 6.35 120.13 | 7.92 149.52 | 9.53 238.25 | 14.27 296.64 | | | | | | | | | 0.580 |
| 32 | 813.00 | | | | | | | | | | | | | 0.660 |
| 34 | 864.00 | | | | | | | | | | | | | 0.746 |
| 36 | 914.00 | | | | | | | | | | | | | 0.835 |
| 38 | 965.00 | | | | | | | | | | | | | 0.931 |
| 40 | 1016.00 | | | | | | | | | | | | | 1.032 |
| 42 | 1067.00 | | | | | | | | | | | | | 1.138 |
| 44 | 1118.00 | | | | | | | | | | | | | 1.249 |
| 46 | 1168.00 | | | | | | | | | | | | | 1.364 |
| 48 | 1219.00 | | | | | | | | | | | | | 1.485 |

TECHNICAL DATA

DEFINITION:

D - Diameter in mm or inch

t - Wall thickness in mm or inch

L - Length in meters or feet

W - Weight of the Pipe in Kg per meter or lb per foot.

WEIGHT OF THE PIPE & TUBE

Standard wall thickness with weight per meter and per foot is listed in specifications and those for API 5L and ASME B 36.10M/B36.19M are included in this brochure.

For non-standard wall thickness:

For carbon steel pipes the below formula applies:

Pipe Weight [kg/m] = $0.0246615 \times (OD [mm] - wt. [mm]) \times wt. [mm]$

for weights per meter of pipe and tube of other materials replace the constant (0.0246615) in the formula above as follows:

| MATERIAL | FACTOR |
|-----------------|---------|
| Alloy 400 | 0.02765 |
| Alloy 600 | 0.02639 |
| Alloy 800 | 0.02513 |
| Aluminium | 0.00848 |
| Copper | 0.02796 |
| Copper-Nickel | 0.02796 |
| Duplex | 0.02450 |
| Stainless Steel | 0.02504 |
| Titanium | 0.01414 |

If without Factor,

Pipe Weight [kg/m] = $(\pi \times (OD^2 - (OD - (wt \times 2))^2) \times \text{Density}) / 4,000$

Note - Densities of different materials are given below:

| GRADE | DENSITY [KG/M3] | GRADE | DENSITY [KG/M3] |
|-----------------|-----------------|-------------------|-----------------|
| Carbon Steel | 7.85 | INCONEL 625 | 8.44 |
| SS304L | 7.90 | INCOLOY 800 | 7.95 |
| 310, 316L, 317L | 7.95 | INCOLOY 825 | 8.14 |
| 410-430 | 7.70 | INCOLOY DS | 7.91 |
| DUPLEX 22,05 | 7.80 | HASTELLOY B | 9.24 |
| 254 SMO -904 L | 8.00 | HASTELLOY B-2 | 9.22 |
| SANICRO 28 | 8.10 | HASTELLOY C-4 | 8.64 |
| NICKEL 200-201 | 8.89 | HASTELLOY C-276 | 8.87 |
| MONEL 400 | 8.83 | CARPENTER 20 Cb-3 | 8.10 |
| INCONEL 600 | 8.42 | TITANIUM | 4.51 |
| INCONEL 601 | 8.06 | | |





HEAD QUARTERS

Tel: +971 4 385 8344

215 BCB1 DUBAI COMMERCITY
UMM RAMOOL, DUBAI, UAE

PO Box: 35822.